



# HEALTH AND WELLBEING SCRUTINY COMMITTEE

Date 18<sup>th</sup> October 2022

Tuesday, 18th October, 2022, 6.00 pm in Town Hall, Market Street, Tamworth

---

## SUPPLEMENT – ADDITIONAL DOCUMENTS

Further to the Agenda and Papers for the above meeting, previously circulated, please find attached the following further information, which was not available when the agenda was issued:

### Agenda No. Item

5. **Update from Midlands Partnership Foundation Trust - Community Mental Health Services** (Pages 3 - 26)  
*To receive an update from the Midlands Partnership Foundation Trust's Head of Primary Care Development & MH Programme Lead (South Staffordshire)*

Yours faithfully

A handwritten signature in black ink, consisting of stylized initials and a long horizontal line extending to the right.

Chief Executive

---

To Councillors: R Claymore, D Maycock, M J Greatorex, J Jones, R Kingstone,  
R Rogers, S Smith, P Thurgood, J Wadrup and County Councillor T Jay.



**Midlands Partnership**  
NHS Foundation Trust  
*A Keele University Teaching Trust*

# Mental Health Developments

Utkar Jheeta - Head of Mental Health Transformation (MPFT)

Page 3

Agenda Item 5



mpftnhs



@mpftnhs

# Current Configuration of Adult MH Services

# Services Delivered



**Midlands Partnership**  
NHS Foundation Trust  
A Keele University Teaching Trust

## Adult Mental Health Community

Adult Community Mental Health

IAPT

Dudley Memory Team

Dementia & Memory Service

Core 24 (Burton Hospital)

Adult Liaison Psychiatry

Mental Health Crisis Service

Dementia Liaison Team

Access

Specialist MH support into Prisons & joint working with LAs

## Adult In-Patient Services

Adult Acute Mental Health In-Patient

Older Adult Mental Health In-Patients

Dementia In-Patient Wards

MOD Beds

PICU

136 Suite

## Social Care

Hospital Discharge Teams  
(discharge pathway)

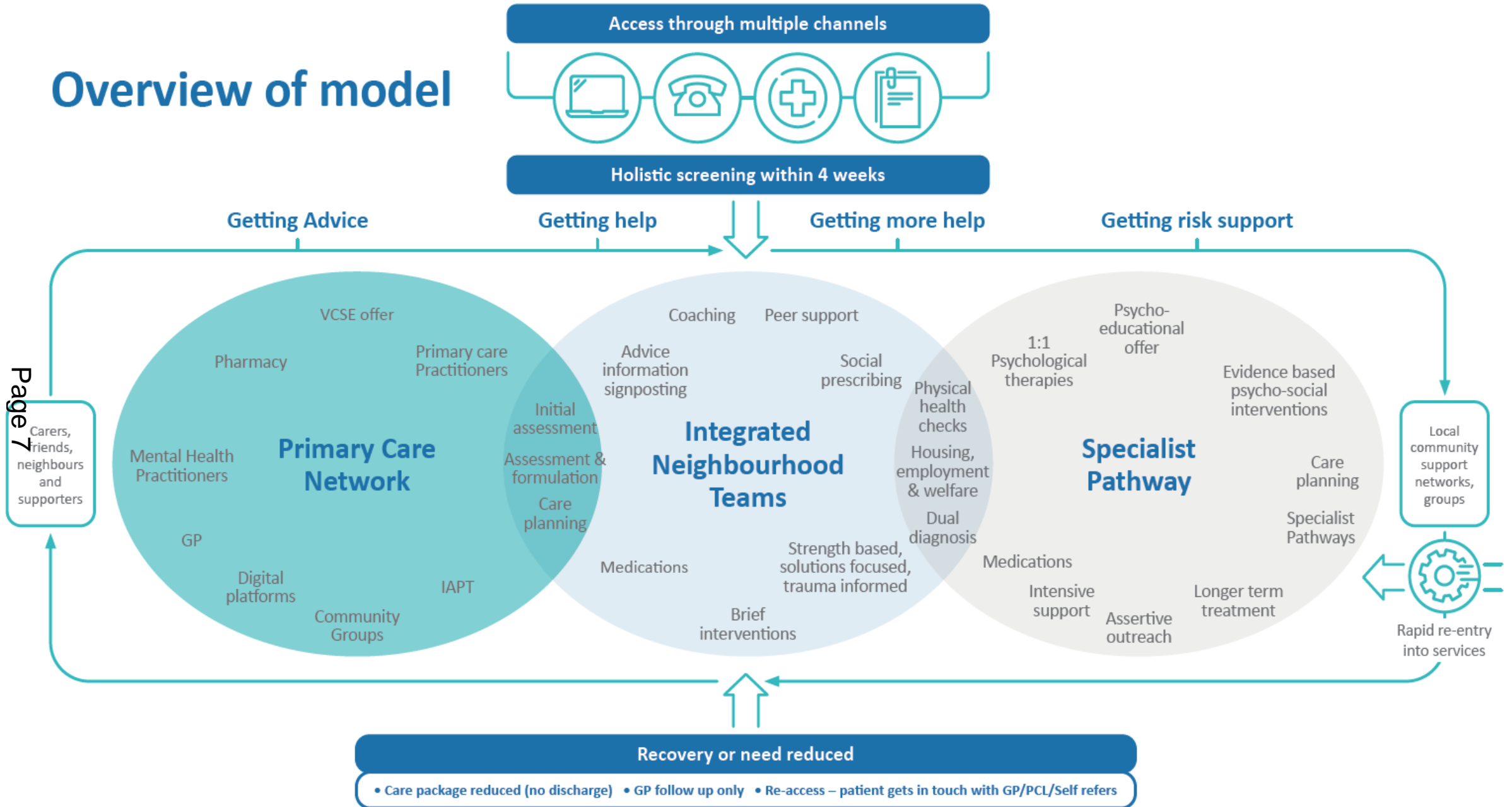
Adult Mental Health Section 75  
Agreement (Staffordshire)

Community Managed Libraries



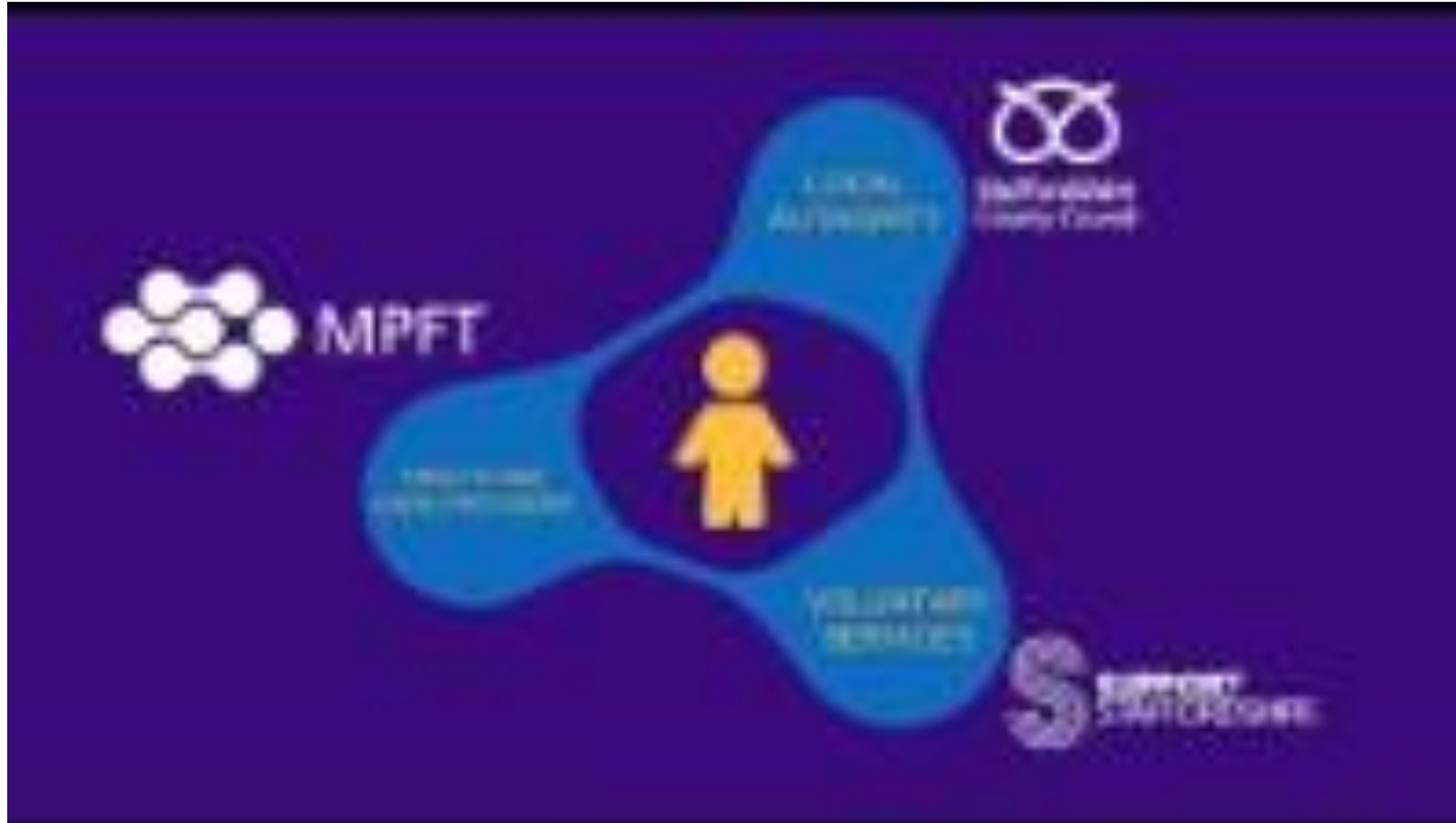
# Community Mental Health Framework

# Overview of model



# Meet our Partner Providers

Page 8





# Crisis Alternatives



# Safe Haven

Page 10

A place for hope when there's distress

 **Mind** Burton and District



# Safe Hands

**Out of Hours Mental Health Support**

# Crisis House



Richmond Fellowship is now part of **Recovery Focus**, an expert group of charities inspiring individual recovery nationwide.



**Midlands Partnership**  
NHS Foundation Trust  
A Keele University Teaching Trust



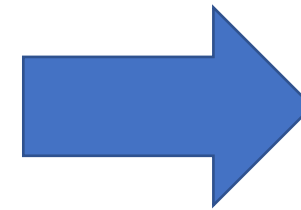
Page 11



# Core 24

# Core 24

Page 13



**Mental health teams in all A&Es by 2021 with Core 24 standard teams in 50% of acute hospitals by 2021**

## Progress to date

- Recruitment in line with establishment and Core 24 principles
- Accommodation

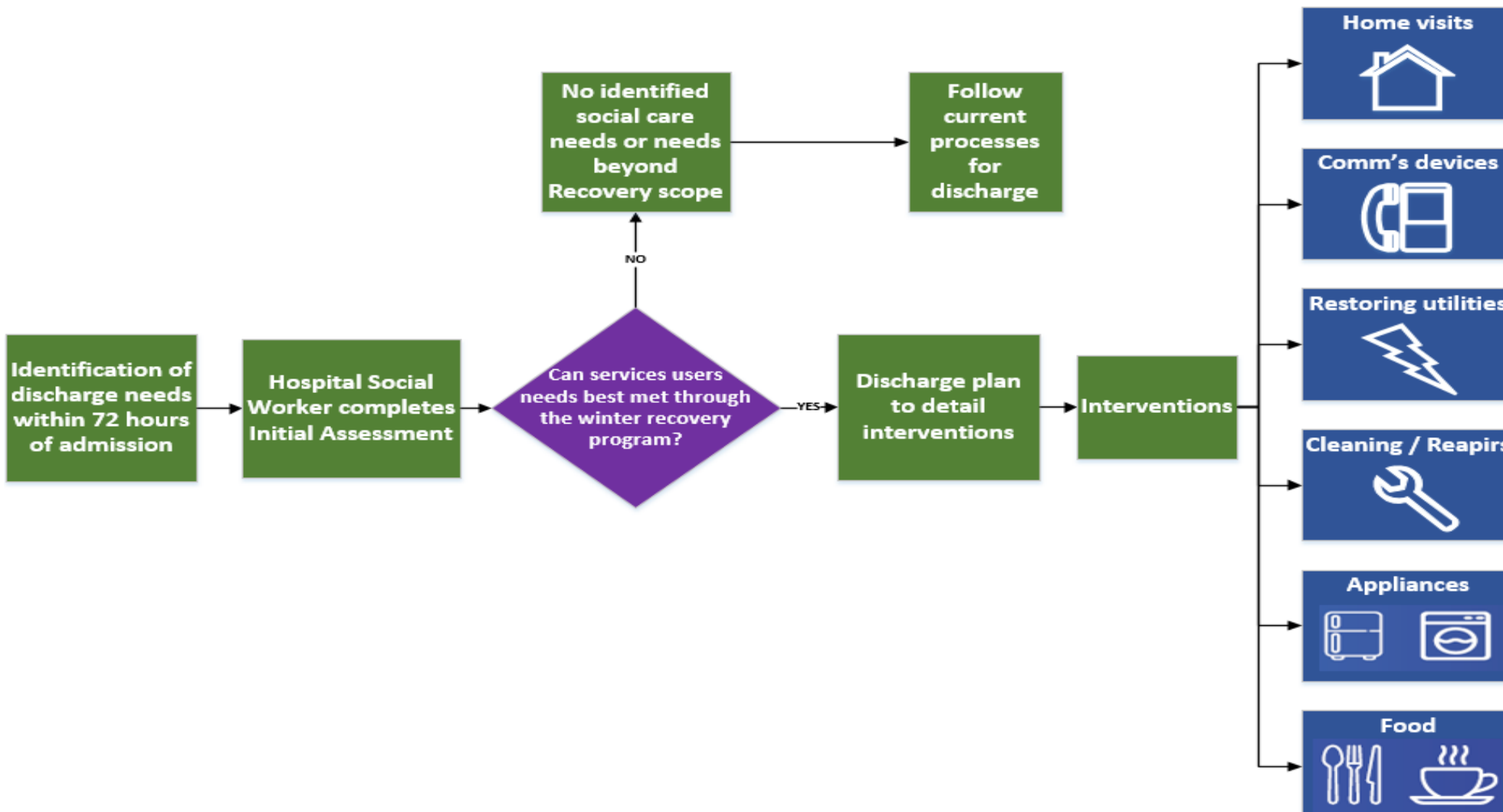
## Next steps

- CQUINN – Biopsychosocial assessments
- Suicide prevention
- Self-harm pathway
- Integrated working practices

# Winter Discharge & Hospital Avoidance

# Winter Discharge Pathway

Page 16



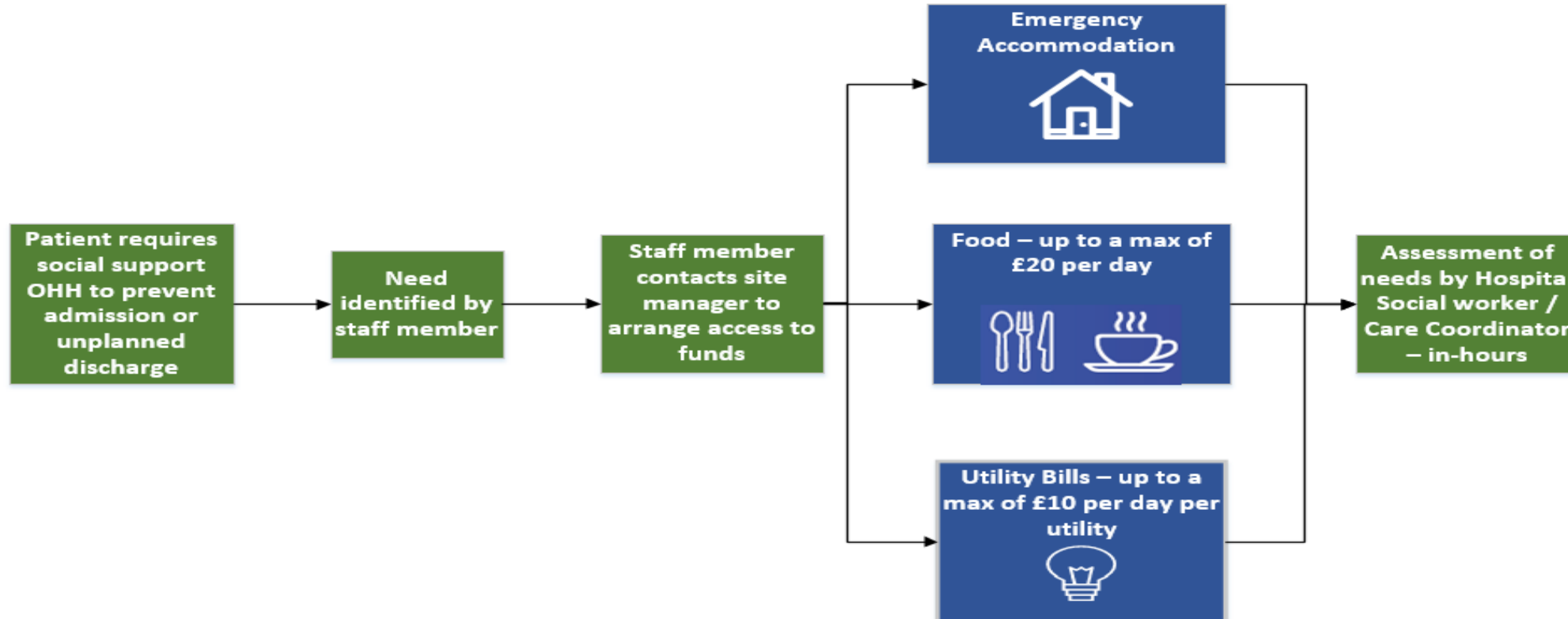


# Winter Discharge Pathway



# Hospital Avoidance / Unplanned Discharge Pathway

Page 18



## Progress to date

- 145 patients supported (Jan 21 – Dec 21)
- Over 70,000 contacts
- DTOC - 2

## Next steps

- Impact on re-admissions
- Homelessness
- Out of hours home sitting service

# IAPT



# Staffordshire and Stoke-on-Trent Wellbeing Service (IAPT)

*Your choice of safe, convenient therapy – On-line, by phone or face-to-face*



**Midlands Partnership**  
 NHS Foundation Trust  
 A Keele University Teaching Trust



**North Staffordshire  
 Combined Healthcare**  
 NHS Trust



**Midlands Partnership**  
 NHS Foundation Trust  
 A Keele University Teaching Trust

# The Staffordshire & Stoke-on-Trent Wellbeing Service



## Integrating Healthcare Provision for Staffordshire

Page 22



# Improving Access to Psychological Therapies (IAPT)

- National model for psychological therapies for anxiety and depression - based on NICE guidance and the IAPT Best Practice Manual
- <https://www.england.nhs.uk/publication/the-improving-access-to-psychological-therapies-manual/>
- Contact us on **0300 303 0923** – dedicated self referral line for IAPT in Staffordshire and Stoke on Trent (prefer patients to self refer)
- [srpeast@mpft.nhs.uk](mailto:srpeast@mpft.nhs.uk) for email referrals – patients will receive three calls from us in 7 days with a message left asking them to contact us

## Progress to date

- IAPT performance trajectories have seen a marked improvement
- Positive feedback from Region on the quality and performance
- National media campaign - <https://www.youtube.com/watch?v=QGWFHe9ccHA>

## Next steps

- KOMP - focus on older adults
- Complex Trauma Leads – bridging gap between primary and secondary care
- Increasing the range of psychological interventions offered by secondary care services



# Additional MH developments

- ADHD prescribing
- Short term home stay
- Dementia reviews
- Assertive outreach for SMI physical health checks

